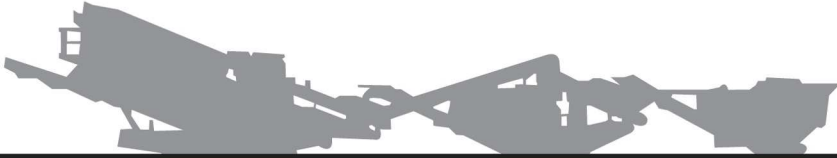


# Powerscreen® Chieftain 1400

## 2 Deck Incline Screen

Specification - Rev 8. 01/01/2015



## Specification

		14ft Hopper (with grid) wheel	14ft Hopper (with grid) track
<b>Total weight</b>		22,000kg (48,502lbs)*	24,900kg (54,895lbs)*
<b>Transport</b>	<b>Length</b>	16.95m (55' 7")	15.4m (50' 6")
	<b>Width</b>	2.75m (9' 0")	2.75m (9' 0")
	<b>Height</b>	3.9m (12' 8")	3.2m (10' 6")
<b>Working</b>	<b>Length</b>	17.9m (58' 9")	16.4m (53' 9")
	<b>Width</b>	16.2m (53' 2")	16.2m (53' 2")
	<b>Height</b>	5.33m (17' 6")	4.8m (15' 7")
<b>Screenunit</b>		3.3m x 1.5m (11' x 5')	3.3m x 1.5m (11' x 5')
<b>Powerunit</b>		Diesel / Hydraulic	Diesel / Hydraulic
<b>Plant Colour</b>		RAL 5021 & RAL 7024	RAL 5021 & RAL 7024

## Features & Benefits

- High capacity up to 400 tph / 441 stph (depending on feed size, mesh size & material type)
- Maximum feed size 150mm
- Engine protection shutdown system
- Powerunit featuring a transverse engine arrangement to aid access & serviceability
- Heavy duty single shaft incline screenbox with adjustable angle
- Hydraulic screen tensioning
- Maximum mobility with heavy duty, low ground pressure crawler tracks
- Removable heavy duty pendant remote control system
- Quick set up time
- High performance hydraulic system - cast iron pumps & motors complete with hydraulic cooler
- Angle adjustable tipping grid with radio control double acting tipping grid rams
- Low profile double deck vibrating grid option with radio remote control tipping grid rams, angle adjustable & fully riveted construction
- Hydraulically folding conveyors for transport
- Fines conveyor drop down facility to aid bottom deck mesh access

## Applications

### Aggregate

- Sand & gravel
- Blasted rock
- River rock

### Recycling

- Top soil
- C&D waste
- Composted materials
- Wood by-products
- Overburden
- Foundry waste

### Mining

- Processed ores
- Processed minerals

**Abbreviations:** T=Track, W=Wheel, Std= Standard, Hyd= Hydraulic, W/O= Without, C/W= Complete with  
 EXT= Extended, DDVG= Double deck vibrating grid, Inc= Including, Aux= Auxiliary,  
 Conv= Conveyor, \*= depending on machine specification

All specifications subject to change without prior notice



## Hopper & Grid

Target area: 4.74m (15' 7") long x 1.85m (6') wide  
Grid aperture: 102mm (4")  
Hopper capacity: 7.5m<sup>3</sup> (9.8 cu. yd.)  
Adjustable angle tipping grid with integral loading and wing plates  
Feed in height: 3.3m (10' 10") with grid

## Feed Conveyor

1050mm (42") wide feed conveyor with direct drive system & hydraulic variable speed control  
4.11m (13' 5") drum centres  
350mm (13.5") drum diameter (drive)  
320mm (12.5") drum diameter (tail)



## Main Conveyor

1050mm (42") 3 ply plain belt  
8.63m (28' 4") drum centres  
286mm (11") drum diameter (drive)  
270mm (10") drum diameter (tail)  
Hydraulically adjustable conveyor, fully skirted & sealed  
Fixed speed



## Screenbox

3.3m x 1.53m (11' x 5') 2 deck incline screen  
Highly aggressive screen drive  
Grease filled 4 bearing screenbox  
3.3m x 1.53m (11' x 5') top deck  
3.2m x 1.53m (11' x 5') bottom deck  
Hydraulic screen angle adjustment 27° - 37°  
Combination side & end tensioned top deck  
End tensioned bottom deck  
Galvanised maintenance platforms on three sides of screen  
Hydraulic screen tensioning on end sections





# Powerscreen® Chieftain 1400

Specification - Rev 8. 01/01/2015

## Finesize - Tail Conveyor

1200mm (48") wide 3 ply plain belt  
5.9m (19' 4") drum centres  
286mm (11") drum diameter (drive)  
270mm (10") drum diameter (tail)

3.91m (12' 10") stockpile height (to drum centre) T  
89m<sup>3</sup> (116 cu. yd.) stockpile volume

4.18m (13' 9") stockpile height (to drum centre) W  
109m<sup>3</sup> (143 cu. yd.) stockpile volume

Fixed speed  
Hydraulically folding  
Chevron belt as option  
Variable to 24°



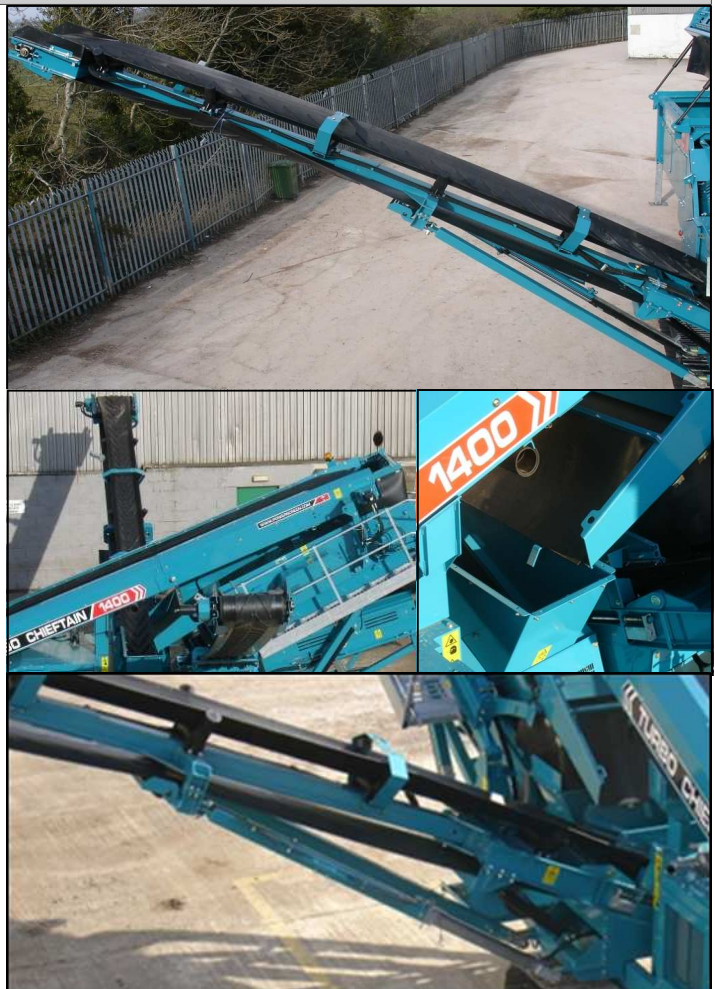
## Midsize & Oversize Side Conveyors

650mm (26") wide 3 ply chevron belt  
9.07m (29' 8") drum centres  
286mm (11") drum diameter (drive)  
270mm (10") drum diameter (tail)

4.49m (14' 9") stockpile height (to drum centre) T  
135m<sup>3</sup> (177 cu. yd.) stockpile volume

4.76m (15' 7") stockpile height (to drum centre) W  
161m<sup>3</sup> (211 cu. yd.) stockpile volume

Variable speed control on each conveyor  
Hydraulic folding  
Fixed angle: 24°



All specifications subject to change without prior notice

# Powerscreen® Chieftain 1400

Specification - Rev 8. 01/01/2015

## Power Unit & Hydraulics

### Engine:

CAT C4.4 ATAAC (Tier 3 / Stage 3A) 4 cylinder diesel

### Performance:

83 kW (111.3hp) @ 2200rpm

### Tank Capacities:

Fuel: 336 L (88 US Gal)

Hydraulic oil: 564 L (149 US Gal)

### Pumps:

Flywheel pump: Cast iron tandem pump 32cc/rev

PTO pump: Cast iron triple pump 23/23/14cc/rev

### Motors:

Belt feeder: 160cc/rev

Main conveyor: Cast iron 630cc/rev

Tail conveyor: Cast iron 500cc/rev

Side conveyors: Cast iron 400cc/rev

Screen motor: Cast iron 56cc/rev

Optional apron feeder: 400cc/rev

### Optional Diesel engine:

Tier 4f / Stage IV: CAT C4.4 82kW (110hp) @ 2200rpm

Tier 4f / Stage IV: CAT C4.4 98kW (131hp) @ 2200rpm

### Optional Constant Speed engine (EU Only):

Tier 3A Constant Speed Engine:

Perkins 1104D-E44TA 96.8kW @ 1800rpm



## Crawler Track Data

Track width: 500mm

Output torque: 25,870 Nm

Gradability degrees: 26.2°

Gearbox ratio: 1:127

Hydraulic motor: 63cc/rev

Approximate speed: 0.9kph (0.56mph)

Total flow per track: 72.6 Lpm



All specifications subject to change without prior notice



# Powerscreen® Chieftain 1400 Options

Specification - Rev 8. 01/01/2015

## Double Deck Vibrating Grid

Target area:

3.8m (12' 6") long x 2.2m (7' 3") wide

Working angle: 10° - 20° (adjustable)

Tip angle: 45° max

Motor: 56cc/rev

Circuit: Coupled to main conveyor circuit

Feed in height: 3.59m (11' 9") with grid

Feed in height: 3.38m (11' 1") with out grid

Transport height: 3.42m (11' 3") Track

Transport height: 4.08m (13' 5") Wheel

Total weight: 28,960kg (63,846lbs) Track

Total weight: 26,000kg (57,320lbs) Wheel



## Dual Power

Dual Power System:

2 of electric motors: 30 kW (40hp) & 30 kW (40hp)

Diesel engine

Integrated control system

This controls either diesel-hydraulic or electric-hydraulic functions

## Other Options

Different coloured machine

Auto lubrication system

Radio controlled tracking

Quick release wedge screen tensioning  
(side tension only)

Extra coupling facility

Full dust suppression

Roll-in bogie

Shredder

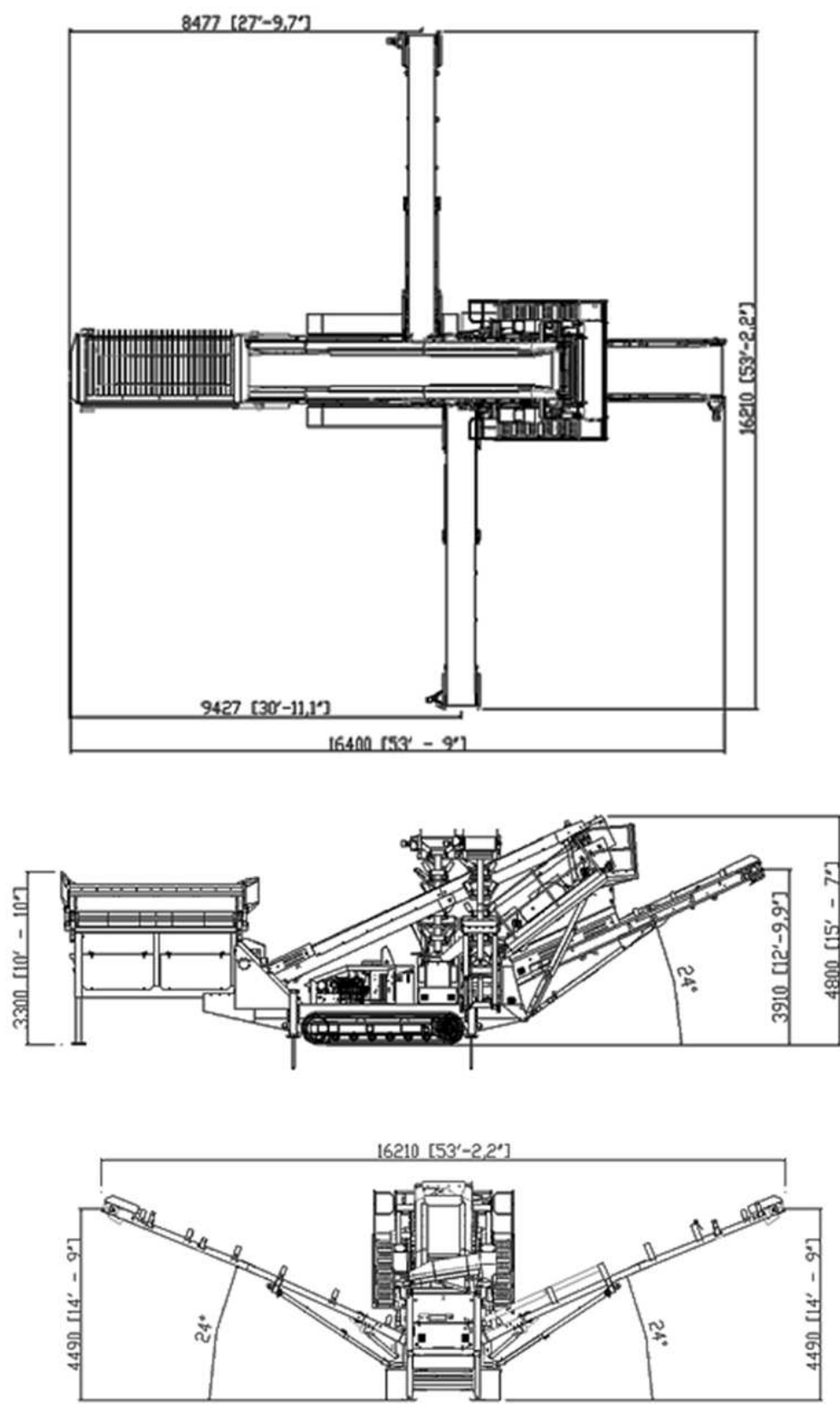
Wheeled chassis machine



All specifications subject to change without prior notice

# Powerscreen® Chieftain 1400

Specification - Rev 8. 01/01/2015

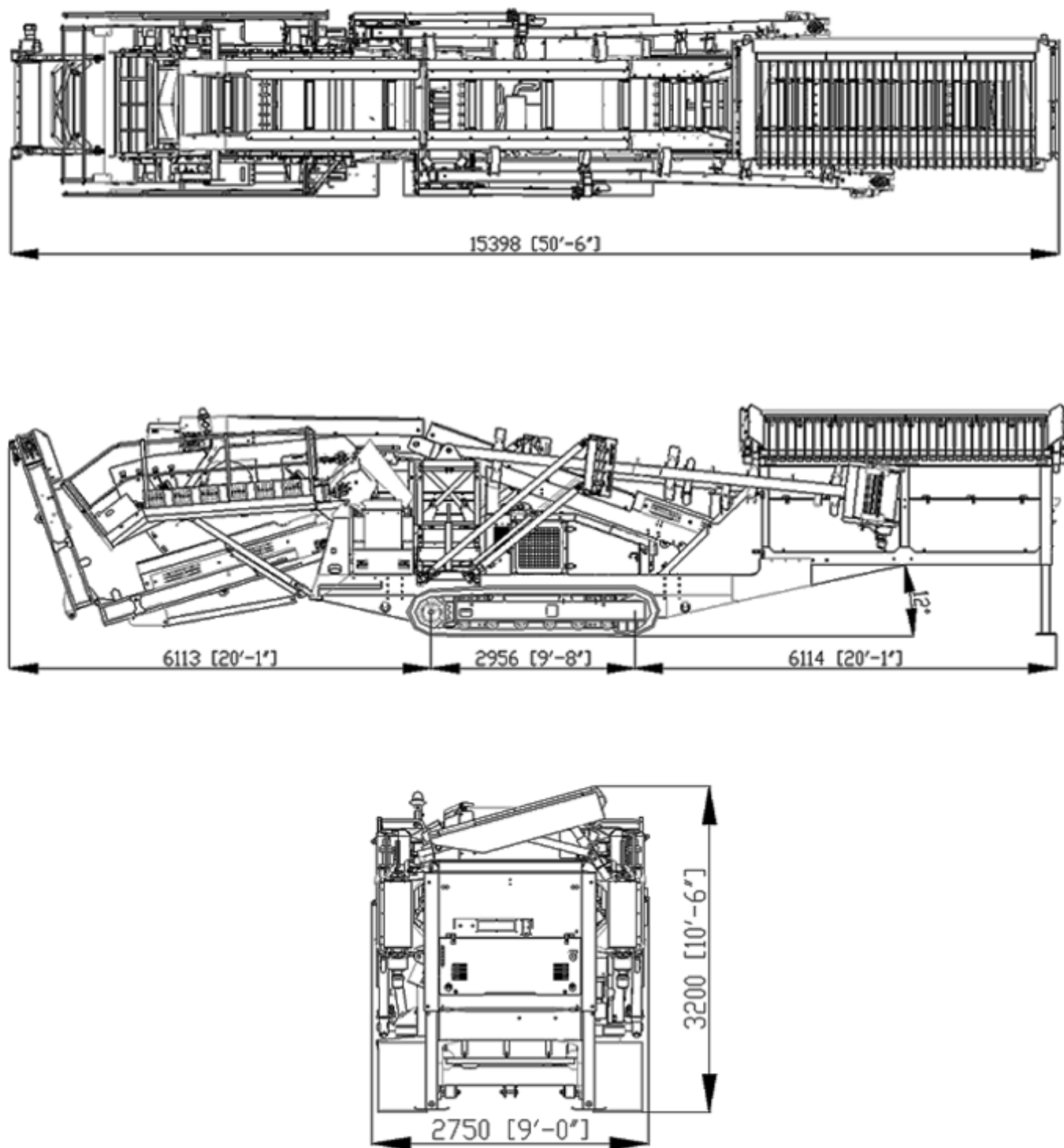


**Figure 1: Chieftain 1400 2 Deck Track Working Position**

All specifications subject to change without prior notice

# Powerscreen® Chieftain 1400

Specification - Rev 8. 01/01/2015



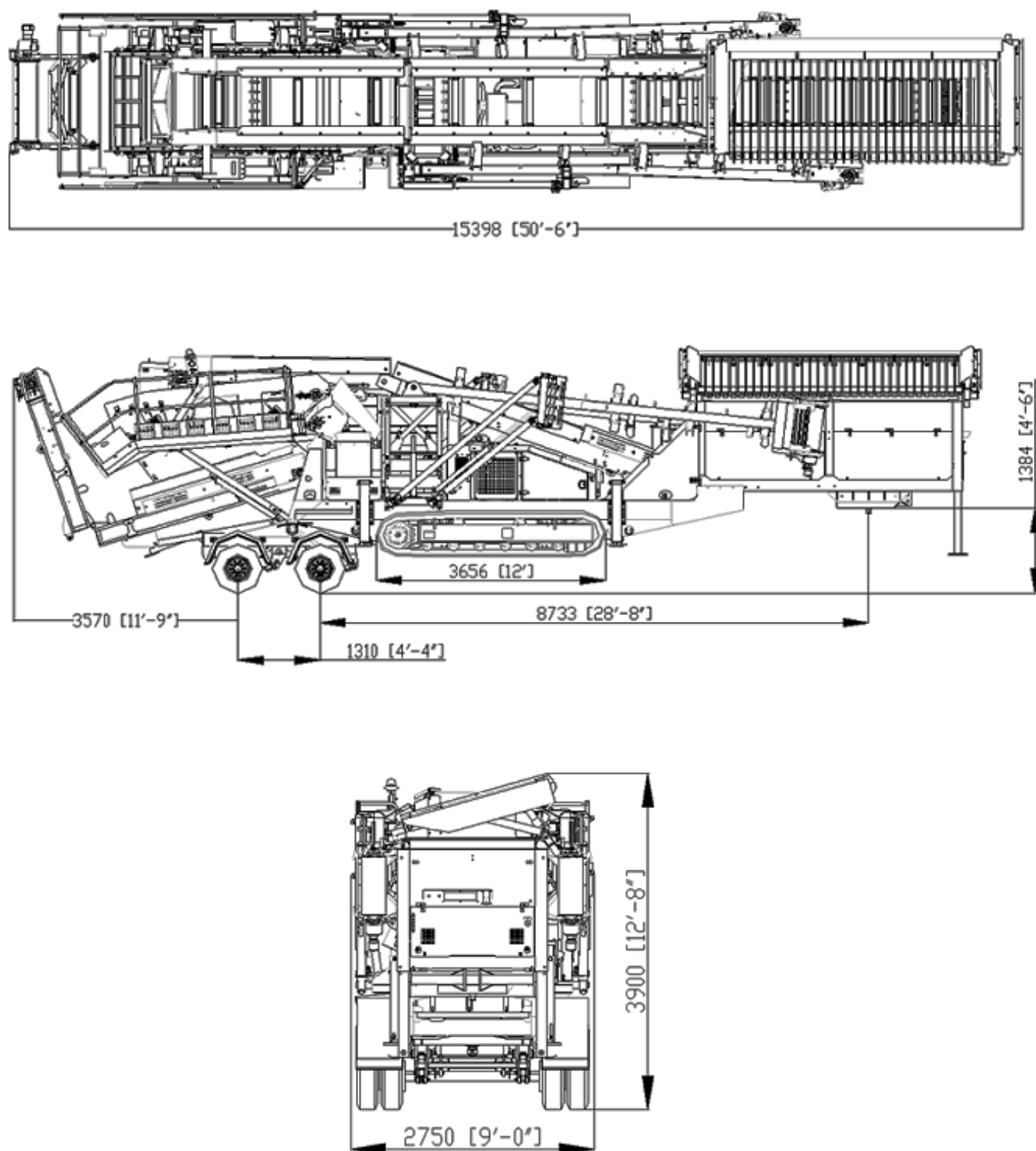
**Figure 2: Chieftain 1400 2 Deck Track Transport Position**

All specifications subject to change without prior notice



# Powerscreen® Chieftain 1400

Specification - Rev 8. 01/01/2015

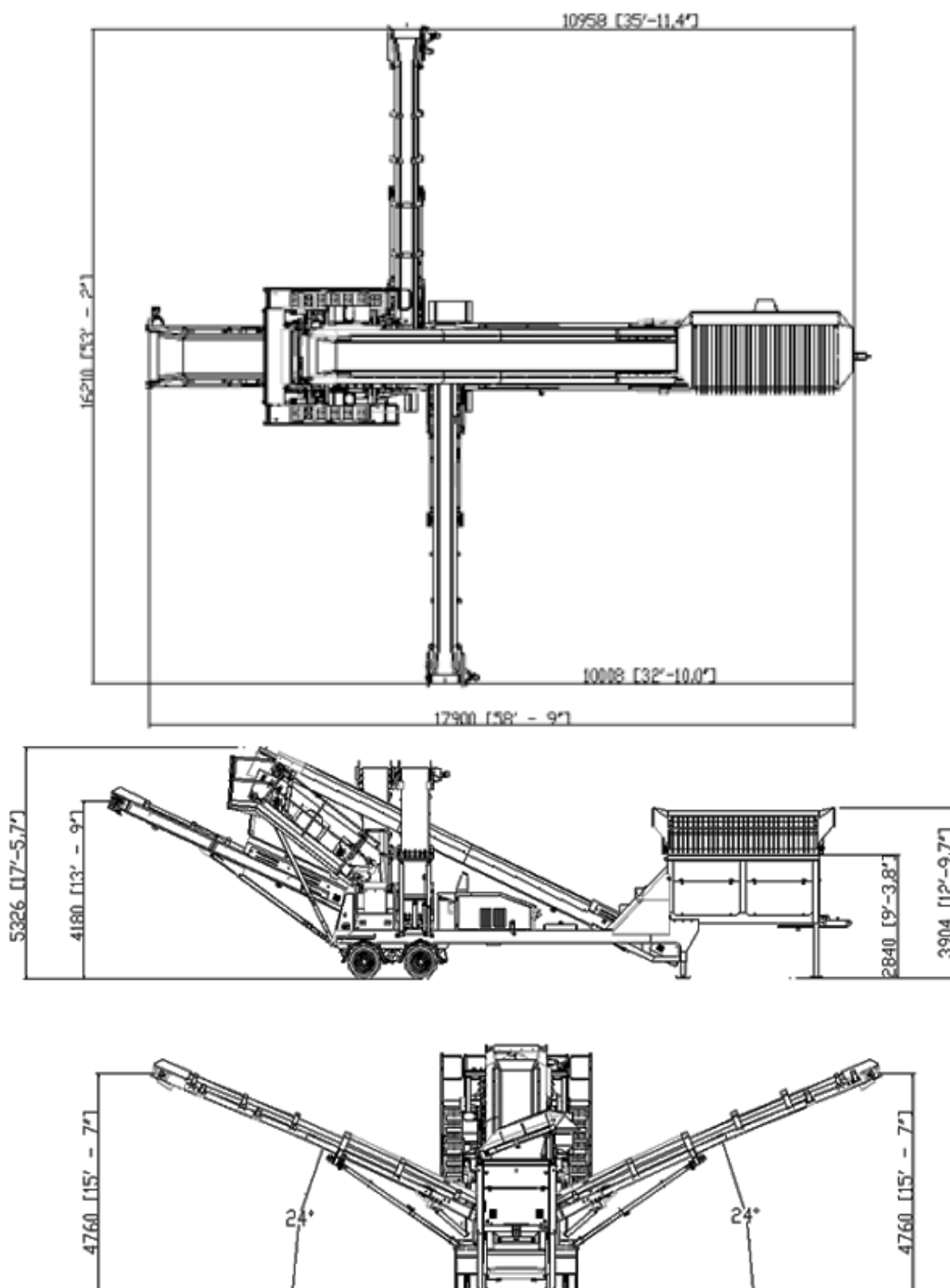


**Figure 3: Chieftain 1400 2 Deck Track Roll-in Bogie**

All specifications subject to change without prior notice

# Powerscreen® Chieftain 1400

Specification - Rev 8. 01/01/2015



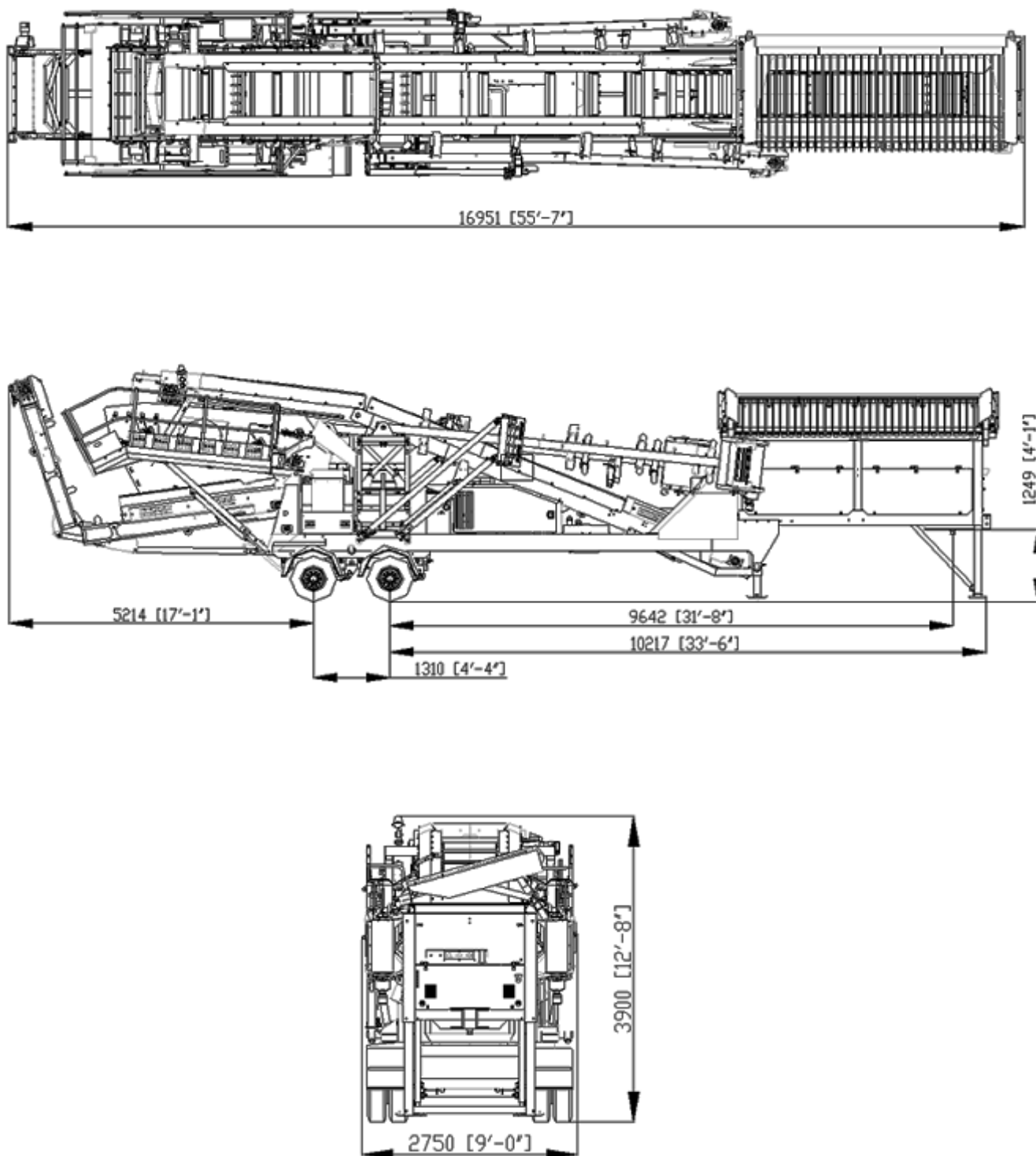
**Figure 4: Chieftain 1400 2 Deck Wheel  
Working Position**

All specifications subject to change without prior notice



# Powerscreen® Chieftain 1400

Specification - Rev 8. 01/01/2015



**Figure 5: Chieftain 1400 2 Deck Wheel Transport Position**

All specifications subject to change without prior notice



# Powerscreen® Chieftain 1400

Specification - Rev 8. 01/01/2015

## **Powerscreen equipment complies with CE requirements.**

Please consult Powerscreen if you have any other specific requirements in respect of guarding, noise or vibration levels, dust emissions, or any other factors relevant to health and safety measures or environmental protection needs. On receipt of specific requests, we will endeavour to ascertain the need for additional equipment and, if appropriate, quote extra to contract prices.

All reasonable steps have been taken to ensure the accuracy of this publication, however due to a policy of continual product development we reserve the right to change specifications without notice.

It is the importers' responsibility to check that all equipment supplied complies with local legislation regulatory requirements.

Plant performance figures given in this brochure are for illustration purposes only and will vary depending upon various factors, including feed material gradings and characteristics. Information relating to capacity or performance contained within this publication is not intended to be, nor will be, legally binding.

Terex GB Ltd.  
200 Coalisland Road  
Dungannon  
Co. Tyrone  
Northern Ireland  
BT71 4DR

Tel: +44(0) 28 8774 0701  
Fax: +44(0) 28 8774 6569

E-Mail: [sales@powerscreen.com](mailto:sales@powerscreen.com)  
Web: [www.powerscreen.com](http://www.powerscreen.com)

Terex is a registered trademark of Terex Corporation in the United States of America and many other countries.  
Powerscreen is a registered trademark of Terex GB Ltd in the United States of America and many other countries.

Copyright Terex Corporation 2015